

# WILLOUGHBY PLAT NO. 10

BEING A TRACT OF LAND LYING IN THE HANSON GRANT SITUATED IN MARTIN COUNTY, FLORIDA.

I, MARSHA STILLER, CLERK OF THE CIRCUIT COURT OF MARTIN COUNTY, FLORIDA, HEREBY CERTIFY THAT THIS PLAT WAS FILED FOR RECORD IN PLAT BOOK \_\_\_\_\_, PAGE \_\_\_\_\_, MARTIN COUNTY, FLORIDA, PUBLIC RECORDS, THIS DAY OF \_\_\_\_\_, 1992

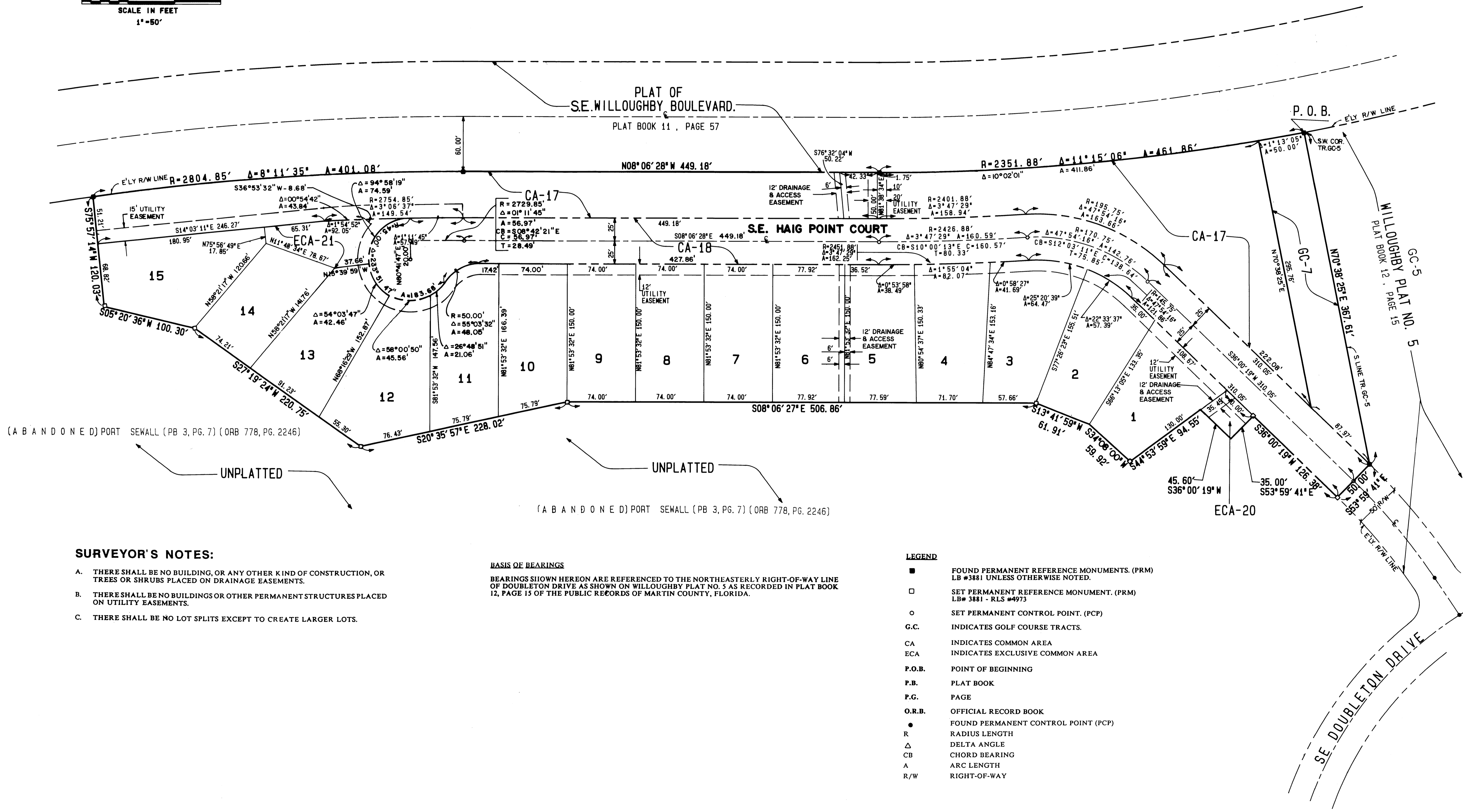
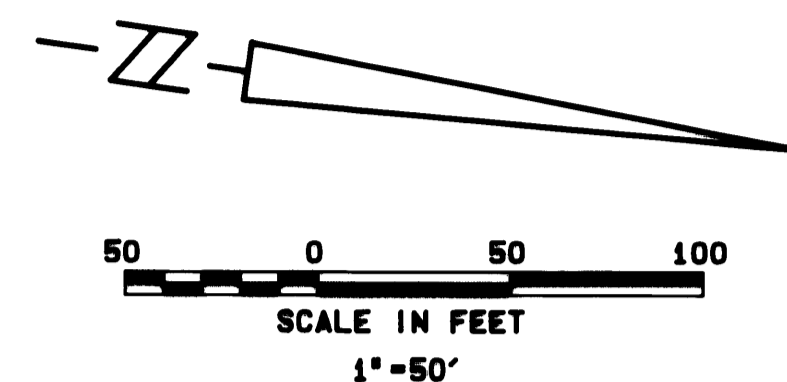
MARSHA STILLER, CLERK  
CIRCUIT COURT  
MARTIN COUNTY, FLORIDA

BY: \_\_\_\_\_  
DEPUTY CLERK

SHEET 2 OF 2

**Hutcheon Engineers**  
a division of Kimley-Horn and Associates, Inc.  
11 East Osceola Street, Stuart, Florida 34994-2114

JULY 1992



(A B A N D O N E D) PORT SEWELL (PB 3, PG. 7) (ORB 778, PG. 2246)

(A B A N D O N E D) PORT SEWELL (PB 3, PG. 7) (ORB 778, PG. 2246)

**SURVEYOR'S NOTES:**

- A. THERE SHALL BE NO BUILDING, OR ANY OTHER KIND OF CONSTRUCTION, OR TREES OR SHRUBS PLACED ON DRAINAGE EASEMENTS.
- B. THERE SHALL BE NO BUILDINGS OR OTHER PERMANENT STRUCTURES PLACED ON UTILITY EASEMENTS.
- C. THERE SHALL BE NO LOT SPLITS EXCEPT TO CREATE LARGER LOTS.

**BASIS OF BEARINGS**

BEARINGS SHOWN HEREON ARE REFERENCED TO THE NORTHEASTERLY RIGHT-OF-WAY LINE OF DOUBLETON DRIVE AS SHOWN ON WILLOUGHBY PLAT NO. 5 AS RECORDED IN PLAT BOOK 12, PAGE 15 OF THE PUBLIC RECORDS OF MARTIN COUNTY, FLORIDA.

**LEGEND**

- FOUND PERMANENT REFERENCE MONUMENTS. (PRM) LB #3881 UNLESS OTHERWISE NOTED.
- SET PERMANENT REFERENCE MONUMENT. (PRM) LB# 3881 - RLS #4973
- SET PERMANENT CONTROL POINT. (PCP)
- G.C. INDICATES GOLF COURSE TRACTS.
- CA INDICATES COMMON AREA
- ECA INDICATES EXCLUSIVE COMMON AREA
- P.O.B. POINT OF BEGINNING
- P.B. PLAT BOOK
- P.G. PAGE
- O.R.B. OFFICIAL RECORD BOOK
- FOUND PERMANENT CONTROL POINT (PCP)
- R RADIUS LENGTH
- Δ DELTA ANGLE
- CB CHORD BEARING
- A ARC LENGTH
- R/W RIGHT-OF-WAY